

SUPERSIX
FULL CARBON

СУПЕРСИКС
ПУЛЛ КАРБОН

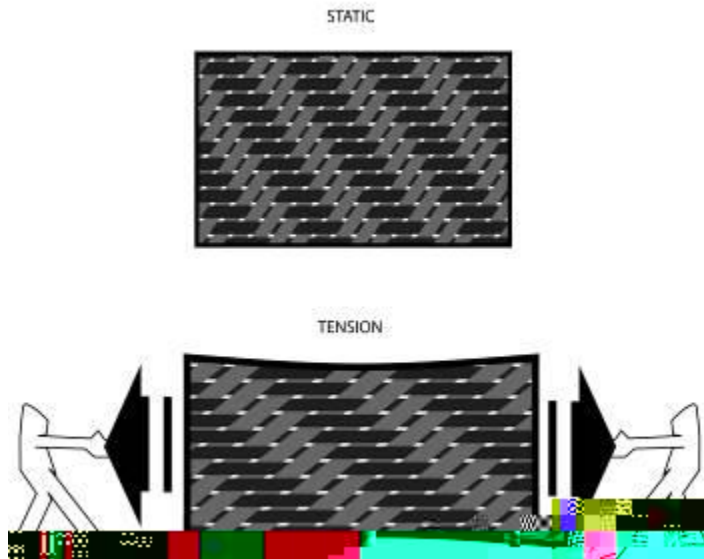
Overview:

- 2011 two versions HI-Mod and Standard
- 900g in CRB 56cm (HM) and 1050g in CRB 56cm (SM) incl. RD hanger
- No changes to 2010 frames
- Take Super Six to great price points
- Eliminate one platform and make the line up even easier to understand

The engineering behind the ride feel:

Woven fiber

Uni-directional fiber



The frame is made entirely of uni-directional carbon material instead of woven material :

- Woven material looks pretty but has more elongation when under tension as the fibers straighten out.
- Woven material in the top sheet does not help the frame stiffness since the uni-directional layers underneath it are doing all the work.
- Uni-directional fibers provide the most stiffness and allow for a lower weight frame since less layers are needed.

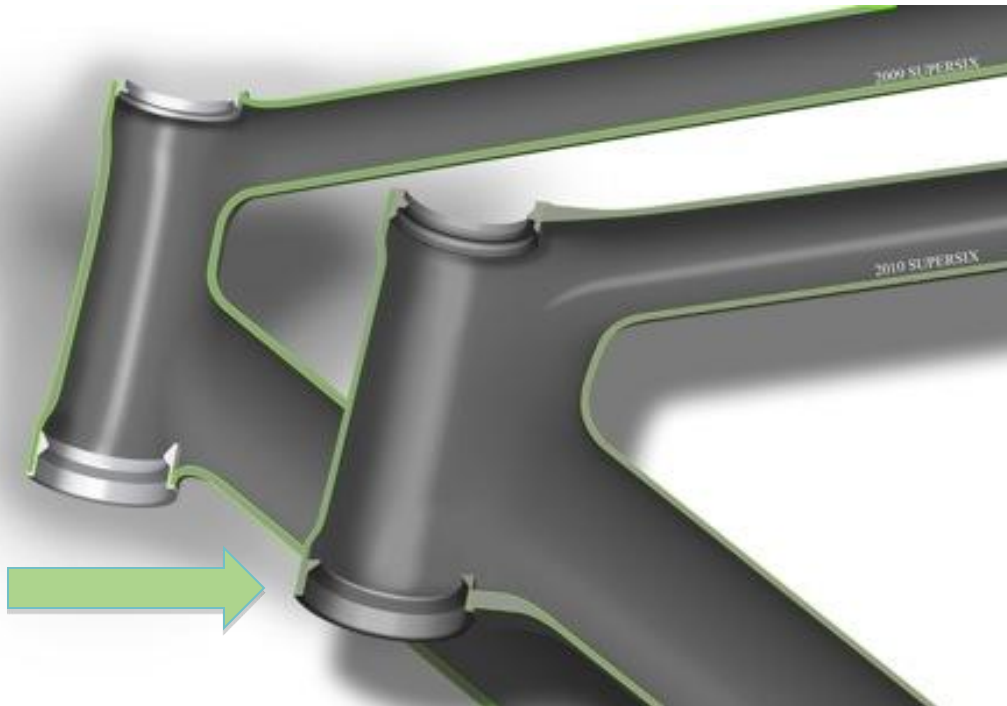
The engineering behind the ride feel:



Deep Radius Head Tube:

- No alloy cups! The SuperSix uses carbon cups to hold the bearings.
- Tube widths are maximized at the head tube junction for the ultimate in force distribution and steering precision.
- The flowing lines allow continuous lengths of fiber to connect the top tube to the head tube to the down tube. This stronger method allows us to use less layers of material which saves weight.

The engineering behind the ride feel:



This view shows the flush junction with the headtube:

- While riding, bending forces are transferred to the lower headset bearing in the direction shown by the arrow in the graphic. By having fiber from the down tube directly supporting these loads, the frame can be made lighter and stiffer.
- Traditionally, the lower headset bearing is not directly supported by the down tube fibers; this creates a frame with less stiffness and requires the use of more fiber (adding weight).

The engineering behind the ride feel:

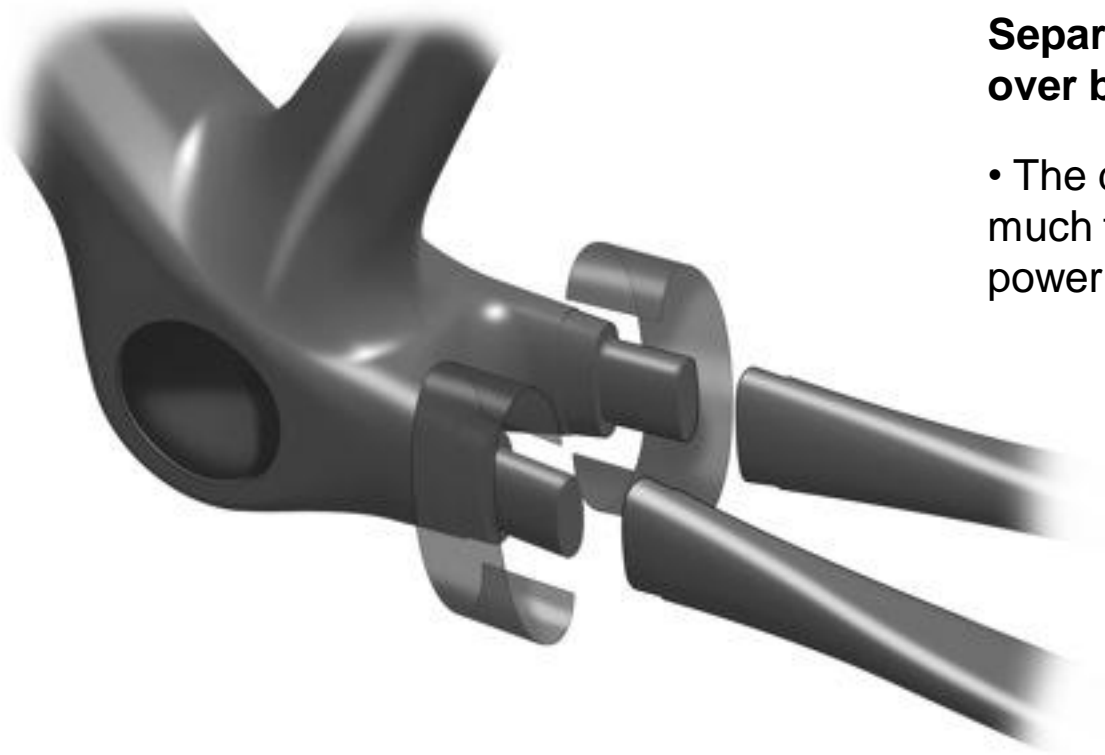


Carbon Overwrapping is a superior method for attaching the rear triangle to the front triangle.

Why?:

- Overwrapping also spreads the connection loads onto a larger area of the front triangle, while lugs concentrate these stresses into smaller areas, which requires more material to maintain the same strength.
- Overwrapping weighs less than lugs; there is less overlap of material and the wall thickness of the overwrap is much less than a traditional lug.

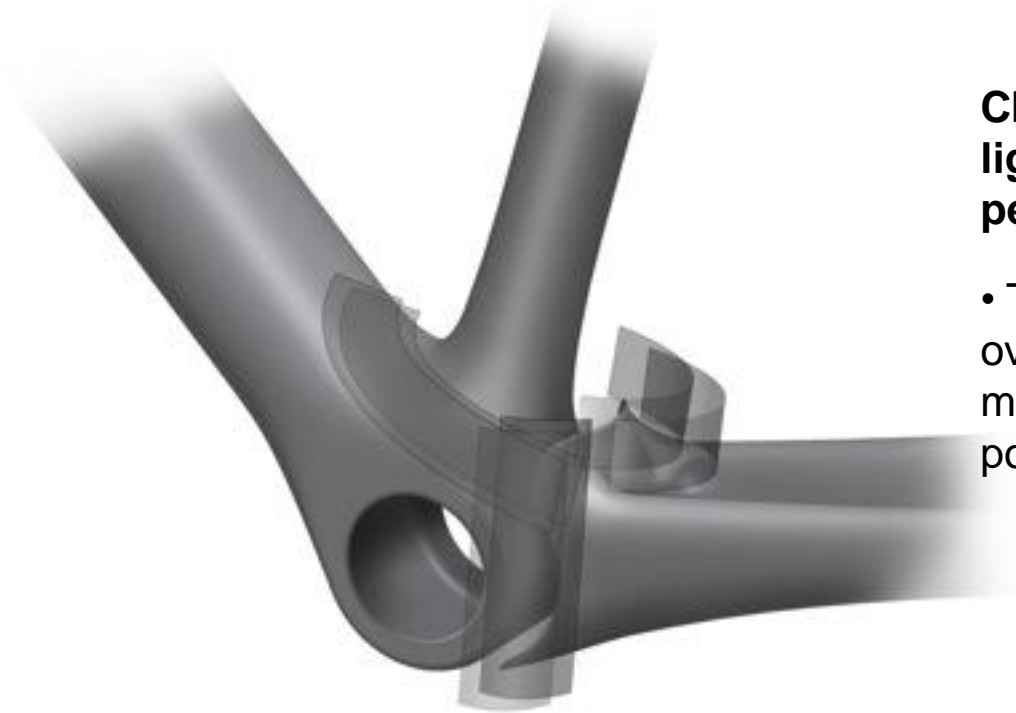
Here's how other companies overwrap:



Separate chainstays are fitted over bulky, inelegant studs.

- The design is heavy and allows too much flexibility in the stays, robbing power transfer to the rear wheel.

Here's how Cannondale overwraps:



Chainstays are a single unit for lighter weight and more efficient pedaling.

- The monolithic design is overwrapped along several axes to maximize strength and increase power transfer.

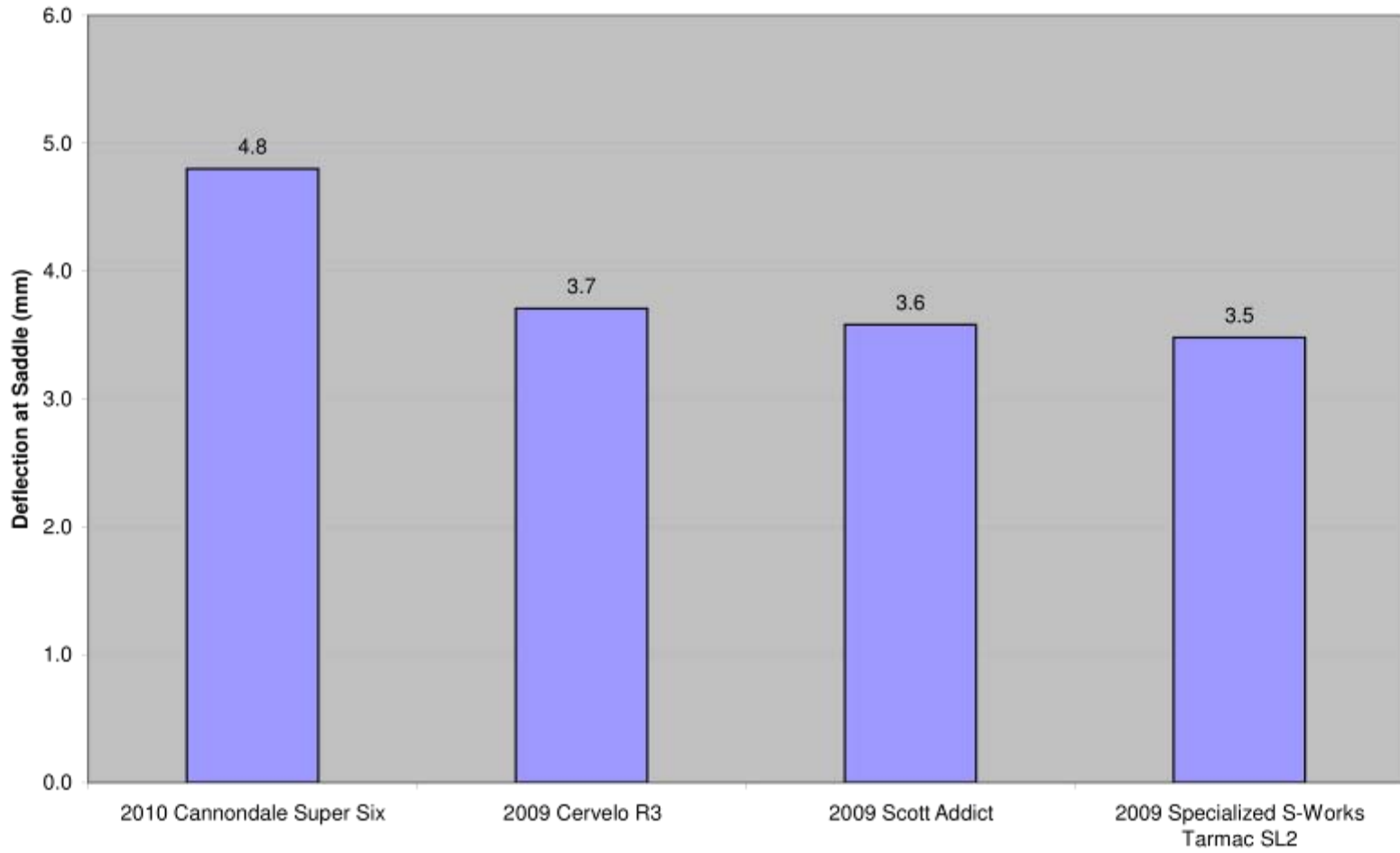
The engineering behind the ride feel:



Chainstays:

- Because chainstays are subject to different loads on the drive side and non-drive side, they're asymmetrical. The drive side chainstay sees high axial loads from the chain, so a tall cross section is spec'ed to give the best possible power transfer.
- On the non-drive side, bending loads from the chain necessitate a wide profile to maximize bending resistance.
- Drive side: 54mm tall by 16mm wide at BB; tapers to 25mm by 19mm wide near the dropout
- Non-drive side: 49mm by 18mm wide at BB; tapers to 25mm by 21mm wide

Frame Comfort



The engineering behind the ride feel:



Hollowgram cranks

- The lightest crankset on the market remains on the new SuperSix.
- The Hollowgram Si SL crankset weighs a svelte 575 grams, and has the best stiffness-to-weight ratio of ANY crank on the market during the last decade!

The engineering behind the ride feel:



SI Fork

- The tapered steerer (1 1/8 to 1.5) reduces weight and improves steering precision.
- In a recent test, the fork beat all the key competitors in side stiffness, which is crucial for high-speed cornering.

Data from March 2009 Tour Magazine Test

Fork	Side Stiffness (N/mm)
Cannondale Super Six	51
Principia Revolution Integral	49
Scott Addict R2	48
Specialized S-Works Tarmac SL2	39
Simplon Pavo	45
Stork Fenomalist	46
Cervelo RS	36
Canyon Ultimate CF SLX	48

Features recap:

- Frame weight is 900g in size 56cm with paint and hangers
- High Stiffness/weight in the BB rigidity
- Overwrap design methods
- Deep radius head tube design
- Classic road geometry and aesthetics
- BeatBox
- Hourglass seatstays

Benefits recap:

- Lighter weight for faster response
- Faster sprints
- Better power transfer
- Lessens stress on the frame and steering precision improved with head tube design
- Gives familiar rider position and maximum performance
- Easier to climb
- Less fatigue at the end of the ride, with hourglass-shaped damping stays

Results

- 2010 Giro d'Italia, overall and 2 stage wins (Basso; stage 15, Nibali; stage 14)
- 2010 Tour of California, 3 stage wins (Chicchi; stage 4, Sagan; stages 5 and 6)
- 2010 Settimana Internazionale (Coppi e Bartali), overall (Santaromita) and 1 stage win (Chicchi; stage 1)
- 2010 Paris-Nice, 2 stage wins (Sagan; stages 3 and 6)
- 2010 Giro del'Appenino, overall (Kiserlovski)
- 2009 Giro d'Italia, 1 stage win (Pellizotti; stage 17)
- 2009 Tour de France polka dot jersey (Pellizotti)
- 24 victories in 2010 to date!



SCHÖN SEIN ALLEIN REICHT NICHT. TESTSIEGER MUSS MAN SEIN.

„Das neue Cannondale Supersix Hi Mod Super Record ist der Gewinner des exklusiven Edel Renner Tests der Dezember Ausgabe des Tour Magazins. Das Supersix konnte sich gegen vier weitere hochwertige Rennräder durchsetzen. Der überarbeitete, mit neuen Carbonfasern belegte Rahmen, ist ein grosser Schritt nach vorne für die US-Marke. Trotz üppigem Lackauftrag ist er sehr leicht, steif, dämpft dabei sogar passabel und will von seinem Fahrer eigentlich nur eins: schnell gefahren werden.“ – Tour Magazin, Ausgabe 12/09

cannondale

cannondale.com



cannondale | cannondale | cannondale | cannondale | cannondale | cannondale | cannondale | cannondale



14.5 LBS



2011 ROAD

1RSH2C + D SUPERSIX HI-MOD 2 Sram Red

Gruppo	Sram Red	To Remember	HI-MOD frame
Wheels	Mavic Ksyrium Elite		Full Red gruppo
Crank	Sram Red, Cannondale C2		Ksyrium Elite new finish
Color	Exposed Carbon (CRB) Magnesium White (WHT)	Intro	September 2010
			*Double option only for US



14.5 LBS



2011 ROAD

1RSH2C + D SUPERSIX HI-MOD 2 Sram Red

Gruppo	Sram Red	To Remember	HI-MOD frame
Wheels	Mavic Ksyrium Elite, new		Full Red gruppo
Crank	Sram Red, Cannondale C2		Ksyrium Elite new finish
Color	Magnesium White (WHT) Exposed Carbon (CRB)	Intro	September 2010
			*Double option only for US



15.6 LBS

2011 ROAD



1RSS1C + D SUPERSIX 1 Dura Ace

- Gruppo** Dura Ace
- Wheels** Mavic Ksyrium Equipe, new
Mavic Ksyrium Elite, new
- Crank** FSA SLK Light
- Color** Jet Black (BLK)
Race Red (RED)
(Blue Tinted Clear) CE

To Remember Ksyrium Elite new finish
Ksyrium Equipe, 1690g

Intro September 2010

*Double option only for US



16.5 LBS



2011 ROAD

1RSS3 SUPERSIX 3 Ultegra

Gruppo	Ultegra	To Remember	SLK crank 620g (CD)
Wheels	Mavic Aksium Race Mavic Ksyrium Equipe		new Equipe 1690g
Crank	FSA SLK Light	Intro	September 2010
Color	Race Red (RED) Blue Tinted Clear (Exposed Carbon (CRB))		Compact and Triple CE Compact and Double US



16.7 LBS



2011 ROAD

1RSS4C + D

SUPERSIX 4 Rival

Gruppo Sram Rival

Wheels Mavic Aksium Race

Crank FSA SLK Light

Color Orange (ORG)
Jet Black (BLK)

To Remember

SRAM Force crank BB30

Intro

September 2010

CUSA only model



17.5 LBS



2011 ROAD

1RSS5C + D SUPERSIX 5 105

Gruppo	New Shimano 105	To Remember	new 105
Wheels	Shimano RS10 Mavic Aksium Race		Gossamer BB30 crank
Crank	FSA Gossamer Pro BB30		
Color	Team Rep (REP) Exposed Carbon (CRB)	Intro	September 2010
			Compact and Triple CE Compact and Double US

CAD 10

The image features the text "CAD 10" in a bold, italicized, sans-serif font. The letters are white with a slight gradient and are reflected below themselves, creating a 3D effect. The background is solid black.

CAD 10

Top Tube



- Horizontally ovalized for stability
- 47.5x42mm at the HT
- Narrows in the middle for knee clearance
- Widens to meet the seat tube and seat stays for stiffness

Delta Seat Tube

- Dramatic flared cross section at the BB shell for stiffness
- 27.2mm seat post for low weight
- Braze-on front derailleur hanger

CAD 10

Seat stays and chain stays



- SAVE Features
- Butted and shaped to allow vertical compliance
- Light, stiff and comfortable

CAND 10

Performance

Hollow forged brake bridge

Light and stiff

Delta Seat tube

Peddalling Efficiency

Smooth Welded

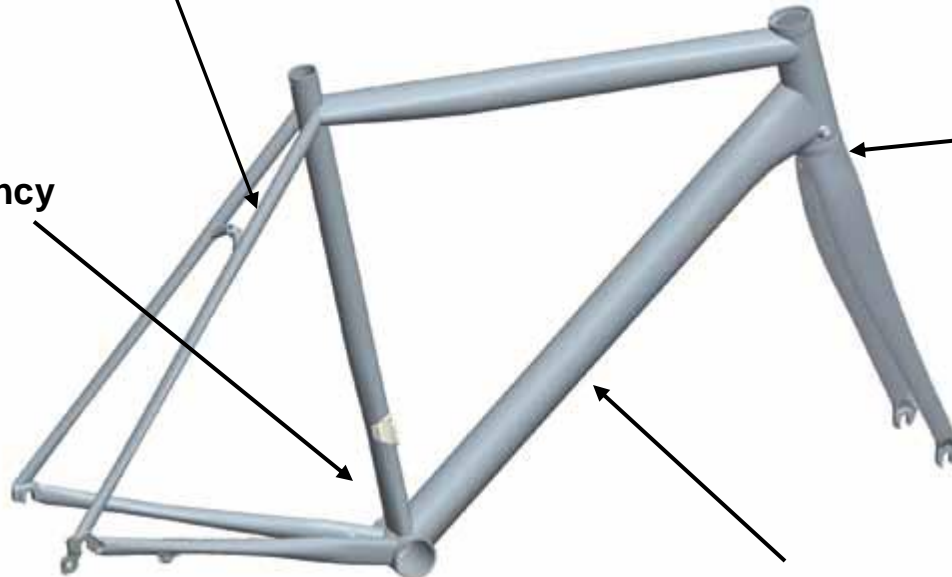
Cannondale's legendary double pass, handfinished welds and heat treatment

Oversized Down Tube

Torsional stiffness for Pedalling Efficiency & Rider Control.

BB30

Cannondale-developed BB30 is the industry benchmark for BB performance.





15.8 LBS



2011 ROAD

1RAX1C + D CAAD10 1 Dura Ace

Gruppo Dura Ace
Wheels Shimano RS80
Crank FSA SLK Light
Color Black Anodized (BLA)
Race Red (RED)

To Remember Anodized Frame
Full Carbon Fork
RS80 1516g
SLK crank 620g (CD)

Intro September 2010

*Double option only for US



15.8 LBS



2011 ROAD



1RAX1C + D CAAD10 1 Dura Ace

Gruppo	Dura Ace	To Remember	Full Carbon Fork
Wheels	Shimano RS80		RS80 1516g
Crank	FSA SLK Light		SLK crank 620g (CD)
Color	Race Red (RED) Black Anodized (BLA)	Intro	September 2010
			*Double option only for US



17.3 LBS

2011 ROAD



1RAX3C + D CAAD10 3 Ultegra

Gruppo	Ultegra	To Remember	Full Carbon Fork
Wheels	Mavic Aksium Race		SLK crank 620g (CD)
Crank	FSA SLK Light	Intro	September 2010
Color	Magnesium White (WHT) Berzerker Green (GRN)	*Double option only for US	



17.3 LBS

2011 ROAD



1RAX3C + D CAAD10 3 Ultegra

Gruppo	Ultegra	To Remember	Full Carbon Fork
Wheels	Mavic Aksium Race		SLK crank 620g (CD)
Crank	FSA SLK Light	Intro	September 2010
Color	Berzerker Green (GRN) Magnesium White (WHT)		*Double option only for US



17.3 LBS



2011 ROAD

1RAX4C + D CAAD10 4 Rival

Gruppo Rival
Wheels Shimano RS10
Crank Sram Force BB30
Color Indigo Blue (BLU)
Jet Black (BLK)

To Remember

Full Carbon Fork
SRAM Force BB30 Crank
September 2010

Intro

*US only model



17.3 LBS



2011 ROAD

1RAX4C + D CAAD10 4 Rival

Gruppo Rival
Wheels Shimano RS10
Crank Sram Force BB30
Color Jet Black (BLK)
Indigo Blue (BLU)

To Remember

Full Carbon Fork
SRAM Force BB30 Crank
September 2010

Intro

*US only model



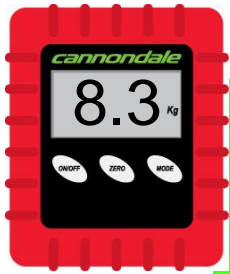
18.4 LBS



2011 ROAD

1RAX5C + D CAAD10 5 105

Gruppo	New Shimano 105	To Remember	new 105
Wheels	Shimano RS10		Gossamer BB30 crank
Crank	FSA Gossamer Pro BB30		
Color	Race Red (RED) Jet Black (BLK)	Intro	September 2010
			Compact and Triple CE Compact and Double US



18.4 LBS



2011 ROAD

1RAX5C + D

CAAD10 5 105

Gruppo	New Shimano 105	To Remember	new 105
Wheels	Shimano RS10		Gossamer BB30 crank
Crank	FSA Gossamer Pro BB30		
Color	Jet Black (BLK) Race Red (RED)	Intro	September 2010
			Compact and Triple CE Compact and Double US

CAD B

The image features the text "CAD B" in a bold, italicized, sans-serif font. The letters are white and have a slight 3D effect. Below the text is a dark, semi-transparent reflection of the same text, creating a mirror-like effect. The entire composition is centered on a solid black background.

CAAD8 Facts

- Focus on lightweight and performance
- Technical improvements on frame and fork
 - BB30 on the 105 level
 - Fork dropped 60g
 - Better design connection to the frame
 - Fork with minimal fender mounts
 - New dropouts on the frame

CAAD 8

Double-pass Smooth Welds
Eliminates stress risers &
aesthetically pleasing

More upright geometry
Between CAAD10 and
Synapse

Machined head tube
Shaves weight but
retains the lateral
stiffness for precise
steering

Hourglass Seatstays
A classic Cannondale touch,
Retains lateral stiffness for power
transfer, but adds comfort during
all-day rides.

A-Stay Asymmetric Chainstays
Drive side stay is oversized for
maximum power transfer, just like
the SuperSix.

**Mechanically formed, directionally
optimized tubing**
Maximizes tube performance
without excess cost for consumers





19.3 LBS



2011 ROAD

1RA85C + T

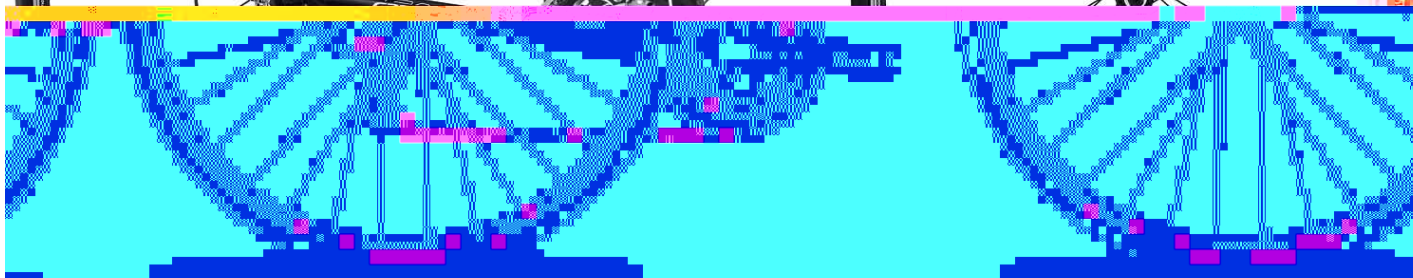
CAAD8 5 105

Gruppo	New Shimano 105	To Remember	new 105
Wheels	Alex RC24 w/ Formula hubs		Gossamer BB30 crank !
Crank	FSA Gossamer BB30		
Color	Magnesium White (WHT) Jet Black (BLK)	Intro	August 2010
			* Triple option for US only



20 LBS

2011 ROAD



1RA86C + T **CAAD8 6 Tiagra**

Gruppo Shimano Tiagra
Wheels Maddux DRX4000 w/ Formula hubs
Crank FSA Omega MegaExo
Color Magnesium White (WHT)
 Jet Black (BBQ)

To Remember Life Time Warranty
Intro August 2010
 * Compact option for US only



20 LBS

2011 ROAD



1RA86C + T **CAAD8 6 Tiagra**

Gruppo Shimano Tiagra
Wheels Maddux DRX4000 w/ Formula hubs
Crank FSA Omega MegaExo
Color Magnesium White (WHT)
Jet Black (BBQ)

To Remember Life Time Warranty
Intro August 2010
* US only model



20.5 LBS

2011 ROAD



1RA87C + T

CAAD8 7 Sora

- Gruppo** Shimano Sora
- Wheels** Maddux DRX4000 w/ Formula hubs
- Crank** FSA Vero
- Color** Race Red (RED)
Magnesium White (WHT)

To Remember Life Time Warranty

Intro August 2010
* Compact option for US only



20.5 LBS



2011 ROAD

1RA87C + T CAAD8 7 Sora

Gruppo Shimano Sora
Wheels Maddux DRX4000 w/ Formula hubs
Crank FSA Vero
Color Race Red (RED)
 Magnesium White (WHT)

To Remember Life Time Warranty
Intro August 2010
 * US only model

SLICE

The word "SLICE" is rendered in a white, italicized, sans-serif typeface. Each letter is composed of two parallel horizontal lines, creating a three-dimensional, sliced appearance. The text is centered horizontally and has a soft, greyish reflection beneath it, suggesting it is floating above a reflective surface. The background is a solid, deep black.



Results

- 2010 Giro d'Italia (TTT, stage 2)
- 2010 Settimana Internazionale (Coppi e Bartali) (TTT, stage 4)
- 2009 Polish National TT Champion (Macej Bodnar)
- 2010 Ironman Kansas (Chrissie Wellington)
- 2010 70.3 California (Mirinda Carfrae)
- 2009 Ironman World Championship (Chrissie Wellington)
- 2009 Ironman World Championship, 1st and 2nd place (Mirinda Carfrae)

SLICE

Speed Shadow

Reduces laminar flow disruptions for faster times.

Ultra narrow top tube

Minimal profile is extremely aero and allows riders knees to be drawn in closer.

Fork and head tube junction is aerodynamic

Improved aerodynamics results in higher speeds.

SAVE stays

Without the fatigue from road buzz and deep-section wheels, triathletes stay fresher for the run.

One-piece bladder-molded construction

Efficient for power transfer and optimized for aerodynamics.

BB30

Cannondale-developed BB30 is now the industry benchmark for BB performance.

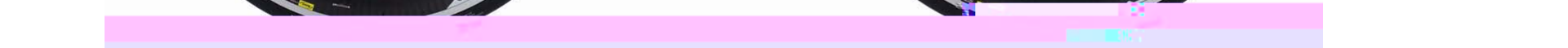
- **2010 has been a great year for SLICE sales**
- **Continuous good reviews in magazines**
- **Delivery is the bottleneck**
- **2011 one HI-MOD model and 3/2 Standard Mod**
- **HI-MOD 1300g frame**
- **Aerodynamic, compliant and light**



17.8 LBS



2011 ROAD



1RM2D Slice HI-MOD 2 Red

Gruppo	Sram Red	To Remember	HI-MOD frame
Wheels	Mavic Cosmic Carbone SL		RTC shifter
Crank	SI Hollowgram w/ Sram TT rings		new SI aero spider
Color	Jet Black (BBQ)		Vision carbon bar and extensions
		Intro	September 2010



18.7 LBS



2011 ROAD

1RM5 Slice Carbon 5 105

Gruppo	Shimano 105	To Remember	new Shimano 105
Wheels	Shimano R500 Fulcrum Racing 7 (CE)	Intro	September 2010
Crank	FSA Gossamer Pro BB30 Vision Trimax BB30		
Color	Magnesium White (WHT)		

SYNAPSE
SYNAPSE

Tuned monocoque carbon layup

Lateral stiffness give better steering feel

SI head tube
20mm taller to aid
rider comfort

SAVE stays

Boosts rider comfort by
damping road buzz without
sacrificing lateral stiffness.

Tuned layup for DT

Improves torsional
resistance for
improved pedaling
efficiency.



BB30

Cannondale-developed BB30 is now the
industry benchmark for BB performance.

- ***Compliant:*** S.A.V.E micro-suspension features in the rear stays and fork legs tame even the roughest roads for all-day comfort and control.
- **Light And Stiff, 1180g for HI-MOD 56cm painted**
- ***Performance Geometry:*** 20mm taller headtube and slightly relaxed angles, compared to our Elite bikes
- **Precisely tuned tube shapes and carbon layups for maximum performance and comfort.**
- **Monocoque Front Triangle co-cured rear end and dropouts**



ROAD



THE WINNER
Cannondale Synapse Carbon 3

its Defy Advanced review at BICYCLE but unfortunately in time for this year left us with a tie between the Synapse and the Scott's CR1 Pro. The word here: Both bikes into our Enthusiast to sharp handling, less stiffness and the Synapse Carbon 3 proved more forgiving spec like softer drop bar, whereas the over nodes to the p also found the Syna a slightly more sport with a taller head to more to take harsh pavement. **WEIGHT** PRICE: \$3,200 **SIZE** 56, 58, 61cm **SPEC** Carbon frame; FSA compact crankset; Shimano Ultegra der; Prologo Scratch **INFO:** cannondale.com

RUNNER-UP

Giant Defy A
WEIGHT: 16.8 lb. (M) **SIZES:** XS, S, M, ML **LIGHTS:** Giant Advan; Mavic Ultegra leura; brakes, crank (11-28); Mavic Ksyrium Optimum tires **INFO:**

Scott CR1 Pro
WEIGHT: 16.5 lb. (M) **SIZES:** XS, S, M, L, XL/61cm **SPEC** bon-fiber fra in, brakes, steels **INFO:**

Synapse Hi-Mod Voted "Sportive Bike of the Year" by Cycling Weekly!

"Cannondale's strength on the ups comes from its solid bottom bracket area, assisted by the BB30 chainset. Big power efforts in the saddle showed little signs of causing any flex at the rear. Out of the saddle on steep ascents you really notice the lateral stiffness the Synapse offers; a pleasing sensation that your efforts are not being wasted"

"The combination of the Synapse's flattened chainstays and a pair of super-skinny, curved seatstays really works well to eliminate all the biggest bumps from reaching the rider. You can while away hour after pleasurable hour in the saddle"

"The Synapse is impressively solid laterally and the BB30 adds even more solidity to your pedaling input with unexpectedly pleasing results, allowing you to enjoy sprint inspiring confidence with stability"

"Handling is precise and confidence inspiring"

Cannondale Synapse Hi Mod Ultegra SL £2,499.99

Distributor	www.cannondale.com
Frame	Synapse High Modulus carbon
Fork	Unidirectional carbon monocoque
Size range	48, 51, 54, 56, 58, 61cm
Weight	16.31lb or 7.4kg
Groupset	Shimano Ultegra SL
Alterations	FSA SLK Light compact chainset
Gear ratios	50/34 with 12-27
Wheels	Mavic Ksyrium Elite
Tyres	Vittoria Rubino Pro
Bars	FSA Wing Pro shallow drop
Stem	FSA 05 115
Seatpost	Integrated with USE clamp
Saddle	Fizik Aliante S



BB30 bottom bracket



FSA compact chainset

TECHNIQUE 3 PAIRES DE ROUES CARBONES À - DE 1 000€ À L'ESSAI

CycloSport

magazine

N° 44 - mars 2009

ENTRAÎNEMENT

- SORTIE LONGUE : LA CLÉ DU SUCCÈS
- REPOUSSEZ VOS LIMITES POUR MIEUX PROGRESSER
- COMMENT ABORDER LE TRAVAIL QUALITATIF ?
- LES PIÈGES DU SURENTRAÎNEMENT

ATELIER

COMMENT BIEN POSER SA GUIDOLINE

NUTRITION

ATTENTION AUX ALLERGIES ALIMENTAIRES

ESSAIS

CANNONDALE SYNAPSE HI MOD COLUMBUS SL MBK RDB50

COL DE FRANCE LE COL DU TÉLÉGRAPHE

www.cyclo-sport.com - mars 09
L 11104 - 44 H - € 4,95 € - EU



15.1 LBS



2011 ROAD

1RCL2C SYNAPSE HI-MOD 2 Sram Red

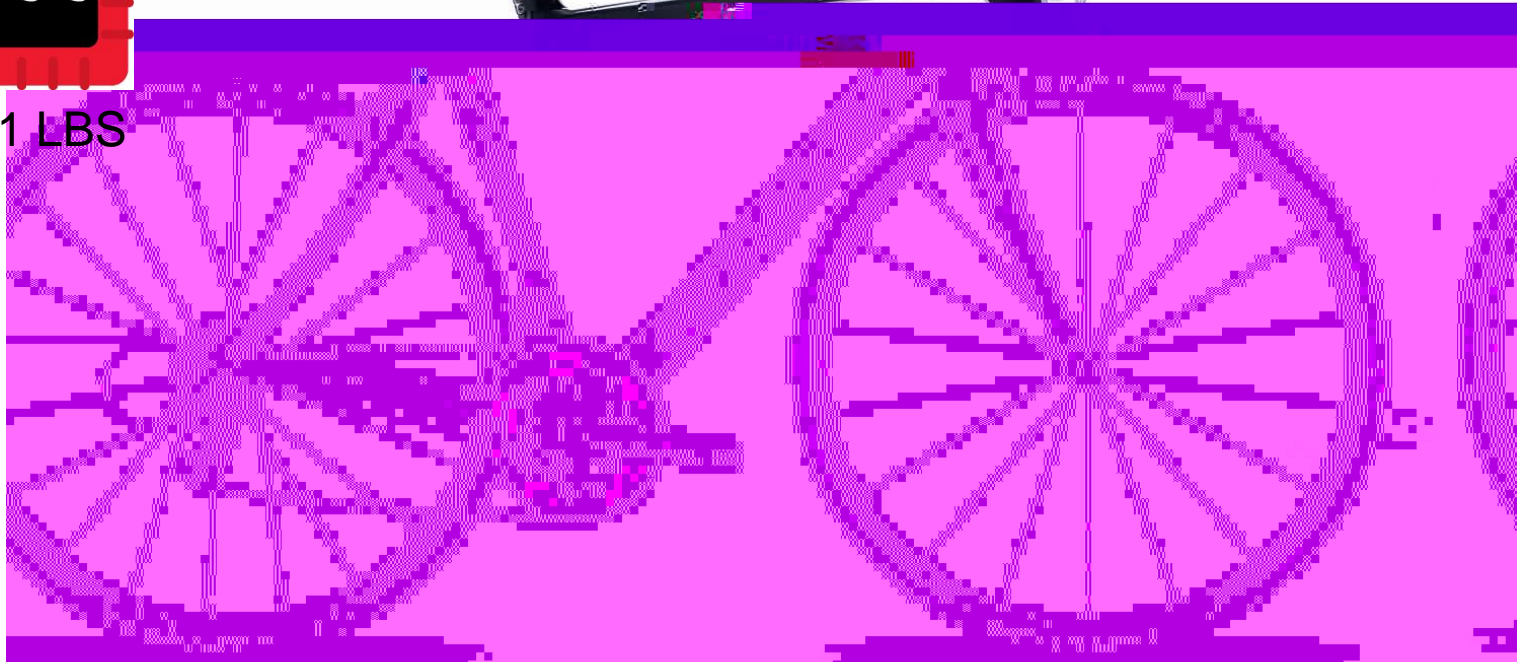
Gruppo	Sram Red	To Remember	HI-MOD frame
Wheels	Mavic Ksyrium Elite		Full Red Gruppo
Crank	Sram Red, Cannondale C2		Ultramo 25mm
Color	Magnesium White (WHT) Exposed Carbon (CRB)	Intro	Ksyrium Elite new finish September 2010



15.1 LBS



2011 ROAD



1RCL2C

SYNAPSE HI-MOD 2 Sram Red

Gruppo Sram Red
Wheels Mavic Ksyrium Elite
Crank Sram Red, Cannondale C2
Color Magnesium White (WHT)
Exposed Carbon (CRB)

To Remember

HI-MOD frame
Full Red Gruppo
Ultramo 25 mm
Ksyrium Elite new finish
September 2010

Intro



2011 ROAD



1RCL3C + T SYNAPSE HI-MOD 3 Ultegra

Gruppo	Shimano Ultegra	To Remember	HI-MOD frame
Wheels	Mavic Ksyrium Elite		SLK crank 640g
Crank	FSA SLK Light BB30		Ultramo 25mm
Color	Exposed Carbon (CRB) Magnesium White (WHT)	Intro	Ksyrium Elite new finish September 2010 CE only



16.5 LBS

2011 ROAD



1RCS3C + T SYNAPSE Carbon 3 Ultegra

Gruppo	Shimano Ultegra	To Remember	new DT R1700 1645g
Wheels	DT Swiss R1700		SLK crank 640g
Crank	FSA SLK Light BB30		Durano S 25mm
Color	Race Red (RED) Charcoal Grey (GRY) [Jet Black (BLK) CE]	Intro	September 2010



16.5 LBS

2011 ROAD



1RCS3C + T SYNAPSE Carbon 3 Ultegra

Gruppo	Shimano Ultegra	To Remember	new DT R1700 1645g
Wheels	DT Swiss R1700		SLK crank 640g
Crank	FSA SLK Light BB30		Durano S 25mm
Color	Race Red (RED) Charcoal Grey (GRY) [Jet Black (BLK) CE]	Intro	September 2010



17.6 LBS

2011 ROAD



1RCS4C + T SYNAPSE Carbon 4 Rival

Gruppo	Sram Rival	To Remember	Rival long cage RD
Wheels	Mavic Aksium Race		Durano 25mm
Crank	FSA Gossamer Pro BB30	Intro	September 2010
Color	Indigo Blue (BLU) Race Red (RED)		



18 LBS



2011 ROAD



1RCS5C + T SYNAPSE Carbon 5 105

Gruppo	Shimano 105	To Remember	new Shimano 105
Wheels	Shimano RS10 Mavic Aksium Race (CE)		new RS10 look Lugano folding 25mm
Crank	FSA Gossamer BB30	Intro	September 2010
Color	Berzerker Green (GRN) Jet Black (BLK)		



18 LBS

2011 ROAD



1RCS5C + T SYNAPSE Carbon 5 Sram 105

Gruppo	Shimano 105	To Remember	new Shimano 105
Wheels	Shimano RS10 Mavic Aksium Race (CE)		new RS10 look Lugano folding 25mm
Crank	FSA Gossamer BB30	Intro	September 2010
Color	Jet Black (BLK) Berzerker Green (GRN)		CE only



18.2 LBS

2011 ROAD



1RCS6C SYNAPSE Carbon 6 Sram Apex

Gruppo	Sram Apex	To Remember	Sram Apex new 10 Speed 11-32 cassette
Wheels	Shimano R500 RS10 (CE)		Lugano 25mm
Crank	Sram Apex FSA Gossamer BB30	Intro	September 2010
Color	Charcoal Grey (GRY) Indigo Blue (BLU) (US only)		



18.2 LBS

2011 ROAD



1RCS6C SYNAPSE Carbon 6 Sram Apex

Gruppo	Sram Apex	To Remember	Sram Apex new 10 Speed
Wheels	Shimano R500 RS10 (CE)		11-32 cassette
Crank	Sram Apex FSA Gossamer BB30	Intro	Lugano 25mm September 2010
Color	Charcoal Grey (GRY) Indigo Blue (BLU) (US only)		

SYNAPSE
SYNAPSE



20 LBS

2011 ROAD



1RAS5C + T Synapse Alloy 5 105

Gruppo	New Shimano 105	To Remember	new 105
Wheels	Shimano RS10		Gossamer BB30 crank !
Crank	FSA Gossamer BB30		Lugano 25mm
Color	Magnesium White (WHT) Jet Black (BLK)	Intro	August 2010
		US only	



20 LBS

2011 ROAD



1RAS5C + T Synapse Alloy 5 105

Gruppo	New Shimano 105	To Remember	new 105
Wheels	Shimano RS10		Gossamer BB30 crank !
Crank	FSA Gossamer BB30		Lugano 25mm
Color	Jet Black (BLK) Magnesium White (WHT)	Intro	August 2010
		US only	



20.9 LBS

2011 ROAD



1RAS6C + T Synapse Alloy 6 Tiagra

Gruppo Shimano Tiagra
Wheels Maddux DRX4000 w/ Formula hubs
Crank FSA Omega MegaExo
Color Magnesium White (WHT)
 Indigo Blue (BLU)

To Remember
Intro
 * US only model

Life Time Warranty
 25mm Lugano
 August 2010



20.9 LBS

2011 ROAD



1RAS6C + T Synapse Alloy 6 Tiagra

Gruppo Shimano Tiagra
Wheels Maddux DRX4000 w/ Formula hubs
Crank FSA Omega MegaExo
Color Indigo Blue (BLU)
 Magnesium White (WHT)

To Remember
Intro
 * US only model

Life Time Warranty
 25mm Lugano
 August 2010

